

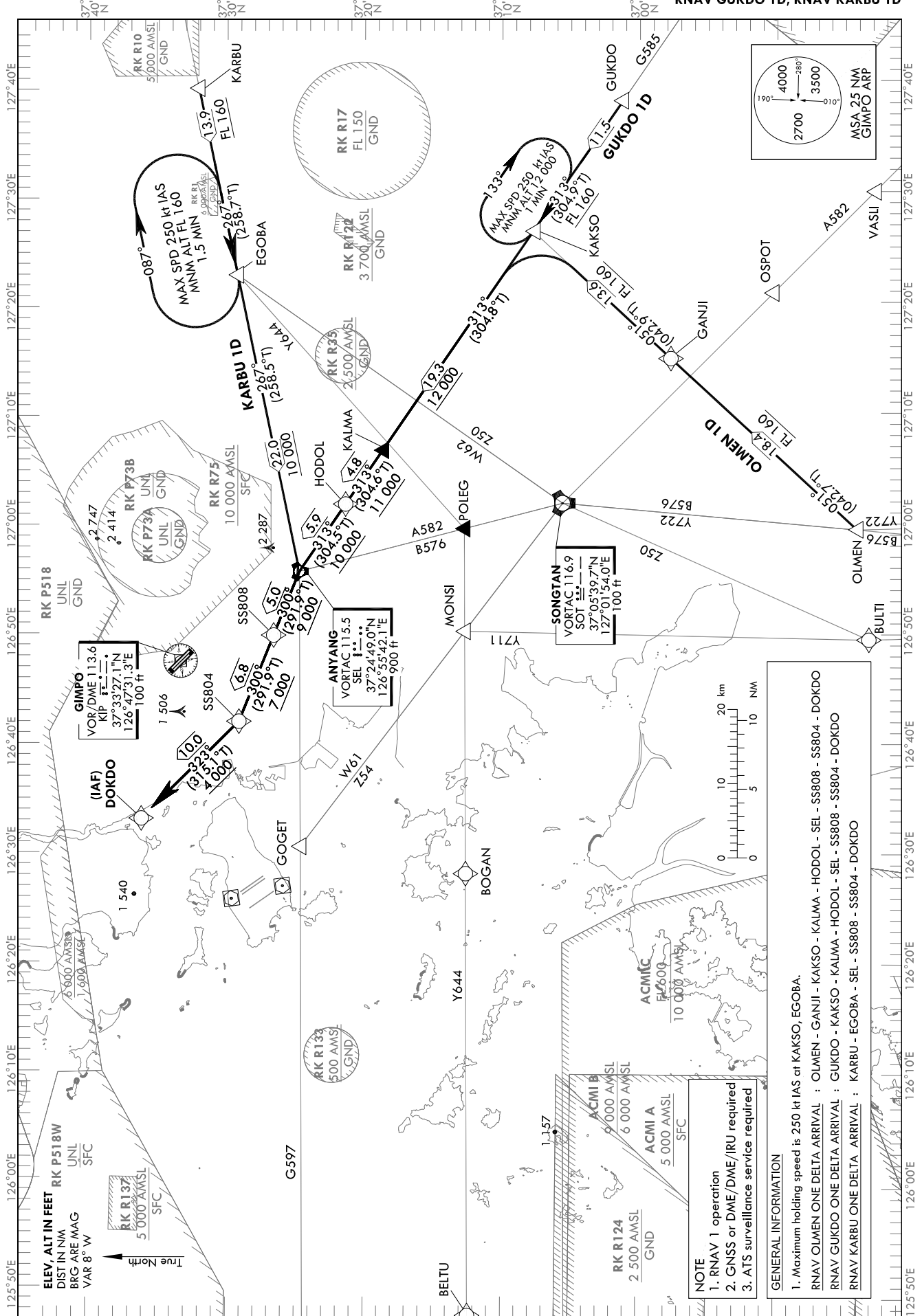
STANDARD ARRIVAL CHART
INSTRUMENT (STAR) - ICAO

Note : Arrival under ICAO Flight Procedures.

TRANSITION ALT 14 000
TRANSITION LVL FL 140

SEOUL APP 119.75
119.1
GIMPO TWR 118.1
118.05

SEOUL/Gimpo Intl(RKSS)
RWY 14L/R
RNAV OLMEN 1D
RNAV GUKDO 1D, RNAV KARBU 1D



SEOUL/Gimpo Intl(RKSS)
RWY 14L/R
RNAV OLMEN 1D, RNAV GUKDO 1D

AERONAUTICAL DATA TABULATION

Standard Instrument Arrival Procedure Coding Tables

RNAV OLMEN 1D												
Serial Number	Path Descriptor	Waypoint Identifier	Fly-over	Course/Track °M(°T)	Distance (NIM)	Turn direction	Altitude (ft)	Speed (kt)	Coordinates	VPA/RDH	Navigation specification	Remarks
001	IF	OLMEN	-	-	-	-	-	-	36°44'13.4"N 126°59'27.6"E (R 184 SEL/D41, R 193 SOT/D22)	-	RNAV 1	-
002	TF	GANJI	-	051 (042.7)	18.4	-	+FL 160	-	36°57'45.7"N 127°15'01.2"E (R 158 SEL/D31, R 135 SOT/D13)	-	RNAV 1	-
003	TF	KAKSO	-	051 (042.9)	13.6	-	+FL 160	-	37°07'44.6"N 127°26'37.4"E (R 132 SEL/D30, R 092 SOT/D20)	-	RNAV 1	-
004	TF	KALMA	-	313 (304.8)	19.3	-	+12 000	-	37°18'44.9"N 127°06'44.8"E (R 132 SEL/D11, R 024 SOT/D14)	-	RNAV 1	-
005	TF	HODOL	-	313 (304.6)	4.8	-	+11 000	-	37°21'27.2"N 127°01'49.9"E (R 132 SEL/D6, R 008 SOT/D16)	-	RNAV 1	-
006	TF	SEL	-	313 (304.5)	5.9	-	+10 000	-	37°24'49.0"N 126°55'42.1"E (R 354 SOT/D20, R 151 KIP/D11)	-	RNAV 1	-
007	TF	SS808	-	300 (291.9)	5.0	-	+9 000	-	37°26'41.1"N 126°49'52.6"E (R 300 SEL/D5, R 172 KIP/D7)	-	RNAV 1	-
008	TF	SS804	-	300 (291.9)	6.8	-	+7 000	-	37°29'12.0"N 126°42'00.0"E (R 300 SEL/D12, R 234 KIP/D6)	-	RNAV 1	-
009	TF	DOKDO	-	323 (315.1)	10.0	-	+4 000	-	37°36'17.1"N 126°33'07.1"E (R 311 SEL/D21, R 292 KIP/D12)	-	RNAV 1	IAF

RNAV GUKDO 1D												
Serial Number	Path Descriptor	Waypoint Identifier	Fly-over	Course/Track °M(°T)	Distance (NIM)	Turn direction	Altitude (ft)	Speed (kt)	Coordinates	VPA/RDH	Navigation specification	Remarks
001	IF	GUKDO	-	-	-	-	-	-	37°01'10.9"N 127°38'22.6"E (R 132 SEL/D42, R 107 SOT/D30)	-	RNAV 1	-
002	TF	KAKSO	-	313 (304.9)	11.5	-	+FL 160	-	37°07'44.6"N 127°26'37.4"E (R 132 SEL/D30, R 092 SOT/D20)	-	RNAV 1	-
003	TF	KALMA	-	313 (304.8)	19.3	-	+12 000	-	37°18'44.9"N 127°06'44.8"E (R 132 SEL/D11, R 024 SOT/D14)	-	RNAV 1	-
004	TF	HODOL	-	313 (304.6)	4.8	-	+11 000	-	37°21'27.2"N 127°01'49.9"E (R 132 SEL/D6, R 008 SOT/D16)	-	RNAV 1	-
005	TF	SEL	-	313 (304.5)	5.9	-	+10 000	-	37°24'49.0"N 126°55'42.1"E (R 354 SOT/D20, R 151 KIP/D11)	-	RNAV 1	-
006	TF	SS808	-	300 (291.9)	5.0	-	+9 000	-	37°26'41.1"N 126°49'52.6"E (R 300 SEL/D5, R 172 KIP/D7)	-	RNAV 1	-
007	TF	SS804	-	300 (291.9)	6.8	-	+7 000	-	37°29'12.0"N 126°42'00.0"E (R 300 SEL/D12, R 234 KIP/D6)	-	RNAV 1	-
008	TF	DOKDO	-	323 (315.1)	10.0	-	+4 000	-	37°36'17.1"N 126°33'07.1"E (R 311 SEL/D21, R 292 KIP/D12)	-	RNAV 1	IAF

Change : Amended coordinate and radial format.

SEOUL/Gimpo Intl(RKSS)
RWY 14L/R
RNAV KARBU 1D

AERONAUTICAL DATA TABULATION

Standard Instrument Arrival Procedure Coding Tables

RNAV KARBU 1D		Waypoint Identifier	Fly-over	Course/Track °M(°T)	Distance (NM)	Turn direction	Altitude (ft)	Speed (kt)	Coordinates	VPA/ RDH	Navigation specification	Remarks
001	IF	KARBU	-	-	-	-	-	-	37°31'59.0"N 127°39'52.0"E (R 086 SEL/D36, R 057 SOT/D40)	-	RNAV 1	-
002	TF	EGOBA	-	267 (258.7)	13.9	-	+FL 160	-	37°29'14.7"N 127°22'45.9"E (R 086 SEL/D22, R 043 SOT/D29)	-	RNAV 1	-
003	TF	SEL	-	267 (258.5)	22.0	-	+10 000	-	37°24'49.0"N 126°55'42.1"E (R 354 SOT/D20, R 151 KIP/D11)	-	RNAV 1	-
004	TF	SS808	-	300 (291.9)	5.0	-	+9 000	-	37°26'41.1"N 126°49'52.6"E (R 300 SEL/D5, R 172 KIP/D7)	-	RNAV 1	-
005	TF	SS804	-	300 (291.9)	6.8	-	+7 000	-	37°29'12.0"N 126°47'00.0"E (R 300 SEL/D12, R 234 KIP/D6)	-	RNAV 1	-
006	TF	DOKDO	-	323 (315.1)	10.0	-	+4 000	-	37°36'17.1"N 126°33'07.1"E (R 311 SEL/D21, R 292 KIP/D12)	-	RNAV 1	IAF

HOLDING PROCEDURE

Holding Identification	Path Descriptor	Waypoint Identifier	Fly-over	Course/Track °M(°T)	Time (min)	Turn direction	Altitude (ft)	Speed (kt)	Coordinates	VPA/ RDH	Navigation specification	Remarks
RNAV GUKDO 1D	-	KAKSO	Y	313 (304.9)	1	R	+12 000	-250	37°07'44.6"N 127°26'37.4"E (R 132 SEL/D30, R 092 SOT/D20)	-	RNAV 1	-
RNAV KARBU 1D	-	EGOBA	Y	267 (258.7)	1.5	R	+FL 160	-250	37°29'14.7"N 127°22'45.9"E (R 086 SEL/D22, R 043 SOT/D29)	-	RNAV 1	-

Change : Amended coordinate and radial format.

INTENTIONALLY

LEFT

BLANK

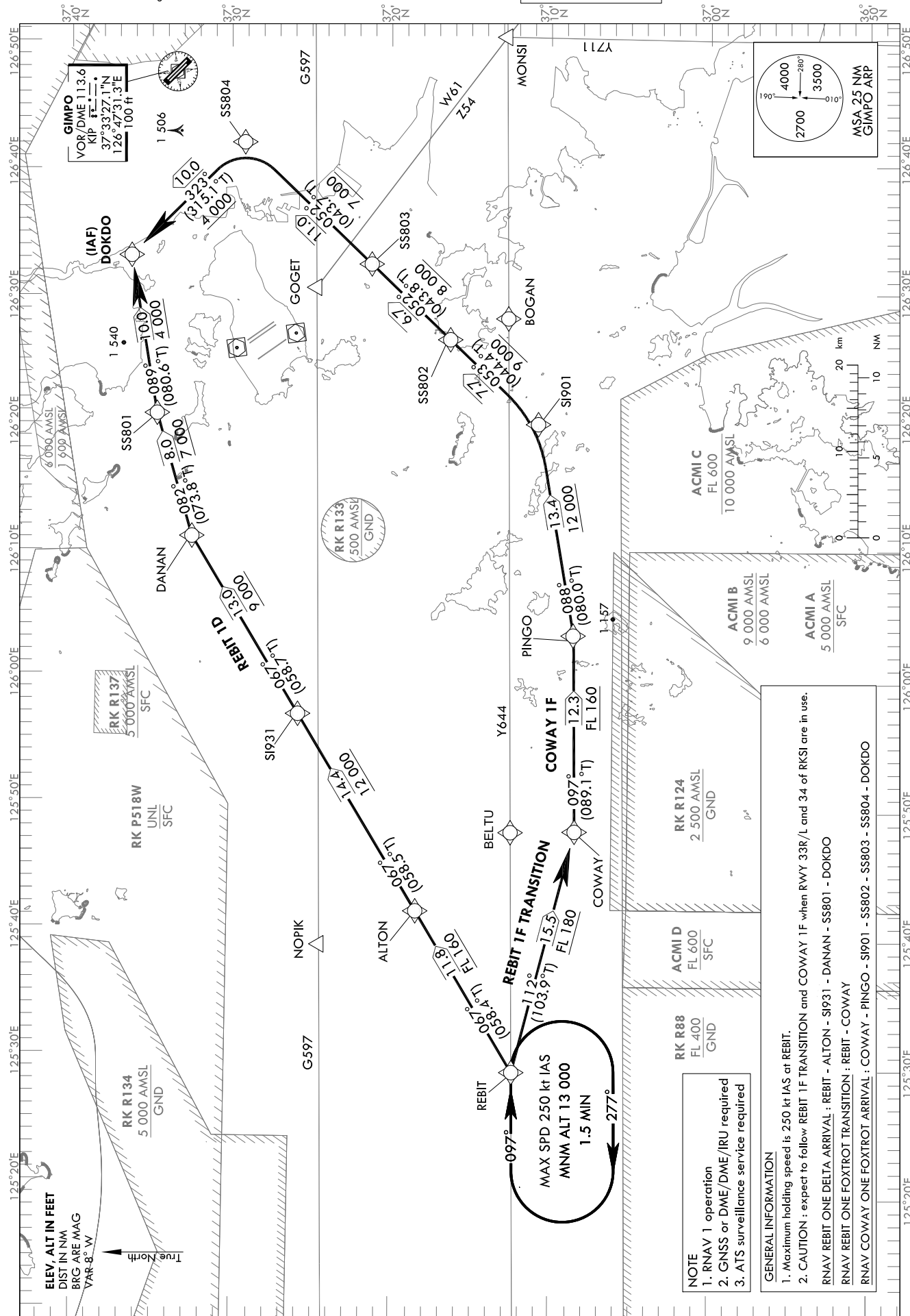
STANDARD ARRIVAL CHART
INSTRUMENT (STAR) - ICAO

Note : Arrival under ICAO Flight Procedures.

TRANSITION ALT 14 000
TRANSITION LVL FL 140

SEOUL APP 119.75
119.1
GIMPO TWR 118.1
118.05

SEOUL/Gimpo Intl(RKSS)
RWY 14L/R
RNAV REBIT 1D, RNAV COWAY 1F



NOTE
 1. RNAV 1 operation
 2. GNSS or DME/DME/IRU required
 3. ATS surveillance service required

GENERAL INFORMATION
 1. Maximum holding speed is 250 kt IAS at REBIT.
 2. CAUTION : expect to follow REBIT 1F TRANSITION and COWAY 1F when RWY 33R/L and 34 of RKSI are in use.
 RNAV REBIT ONE DELTA ARRIVAL : REBIT - ALTON - SI931 - DANAN - SS801 - DOKDO
 RNAV REBIT ONE FOXTROT TRANSITION : REBIT - COWAY
 RNAV COWAY ONE FOXTROT ARRIVAL : COWAY - PINGO - SI901 - SS802 - SS803 - SS804 - DOKDO

SEOUL/Gimpo Intl(RKSS)

RWY 14L/R

RNAV REBIT 1D, REBIT 1F TRANSITION, RNAV COWAY 1F

AERONAUTICAL DATA TABULATION

Standard Instrument Arrival Procedure Coding Tables

RNAV REBIT 1D												
Serial Number	Path Descriptor	Waypoint Identifier	Fly-over	Course/Track °M(°T)	Distance (NM)	Turn direction	Altitude (ft)	Speed (kt)	Coordinates	VPA/RDH	Navigation specification	Remarks
001	IF	REBIT	-	-	-	-	-	-	37°12'03.0"N 125°29'12.7"E (R 268 SEL/D70, R 283 SOT/D74)	-	RNAV 1	-
002	TF	ALTON	-	067 (058.4)	11.8	-	+FL 160	-	37°18'12.6"N 125°41'46.1"E (R 272 SEL/D59, R 289 SOT/D65)	-	RNAV 1	-
003	TF	S1931	-	067 (058.5)	14.4	-	+12 000	-	37°25'42.2"N 125°57'05.0"E (R 279 SEL/D47, R 299 SOT/D55)	-	RNAV 1	-
004	TF	DANAN	-	067 (058.7)	13.0	-	+9 000	-	37°32'26.0"N 126°11'04.0"E (R 290 SEL/D36, R 312 SOT/D49)	-	RNAV 1	-
005	TF	SS801	-	082 (073.8)	8.0	-	+7 000	-	37°34'39.1"N 126°20'42.3"E (R 298 SEL/D30, R 281 KIP/D21)	-	RNAV 1	-
006	TF	DOKDO	-	089 (080.6)	10.0	-	+4 000	-	37°36'17.1"N 126°33'07.1"E (R 311 SEL/D21, R 292 KIP/D12)	-	RNAV 1	IAF

RNAV REBIT 1F TRANSITION												
Serial Number	Path Descriptor	Waypoint Identifier	Fly-over	Course/Track °M(°T)	Distance (NM)	Turn direction	Altitude (ft)	Speed (kt)	Coordinates	VPA/RDH	Navigation specification	Remarks
001	IF	REBIT	-	-	-	-	-	-	37°12'03.0"N 125°29'12.7"E (R 268 SEL/D70, R 283 SOT/D74)	-	RNAV 1	-
002	TF	COWAY	-	112 (103.9)	15.5	-	+FL 180	-	37°08'17.9"N 125°48'04.6"E (R 261 SEL/D56, R 281 SOT/D59)	-	RNAV 1	-

RNAV COWAY 1F												
Serial Number	Path Descriptor	Waypoint Identifier	Fly-over	Course/Track °M(°T)	Distance (NM)	Turn direction	Altitude (ft)	Speed (kt)	Coordinates	VPA/RDH	Navigation specification	Remarks
001	IF	COWAY	-	-	-	-	+FL 180	-	37°08'17.9"N 125°48'04.6"E (R 261 SEL/D56, R 281 SOT/D59)	-	RNAV 1	-
002	TF	PINGO	-	097 (089.1)	12.3	-	+FL 160	-	37°08'28.1"N 126°03'25.2"E (R 257 SEL/D45, R 282 SOT/D47)	-	RNAV 1	-
003	TF	S1901	-	088 (080.0)	13.4	-	+12 000	-	37°10'46.2"N 126°19'55.9"E (R 252 SEL/D32, R 287 SOT/D34)	-	RNAV 1	-
004	TF	SS802	-	053 (044.4)	7.7	-	+9 000	-	37°16'18.1"N 126°26'42.2"E (R 258 SEL/D25, R 232 KIP/D24)	-	RNAV 1	-
005	TF	SS803	-	052 (043.8)	6.7	-	+8 000	-	37°21'14.9"N 126°32'26.8"E (R 267 SEL/D19, R 233 KIP/D17)	-	RNAV 1	-
006	TF	SS804	-	052 (043.7)	11.0	-	+7 000	-	37°29'12.0"N 126°42'00.0"E (R 300 SEL/D12, R 234 KIP/D6)	-	RNAV 1	-
007	TF	DOKDO	-	323 (315.1)	10.0	-	+4 000	-	37°36'17.1"N 126°33'07.1"E (R 311 SEL/D21, R 292 KIP/D12)	-	RNAV 1	IAF

HOLDING PROCEDURE												
Holding Identification	Path Descriptor	Waypoint Identifier	Fly-over	Course/Track °M(°T)	Time (min)	Turn direction	Altitude (ft)	Speed (kt)	Coordinates	VPA/RDH	Navigation specification	Remarks
RNAV REBIT 1F TRANSITION	-	REBIT	Y	097 (089.1)	1.5	R	+13 000	-250	37°12'03.0"N 125°29'12.7"E (R 268 SEL/D70, R 283 SOT/D74)	-	RNAV 1	-

Change : Amended coordinate and radial format.

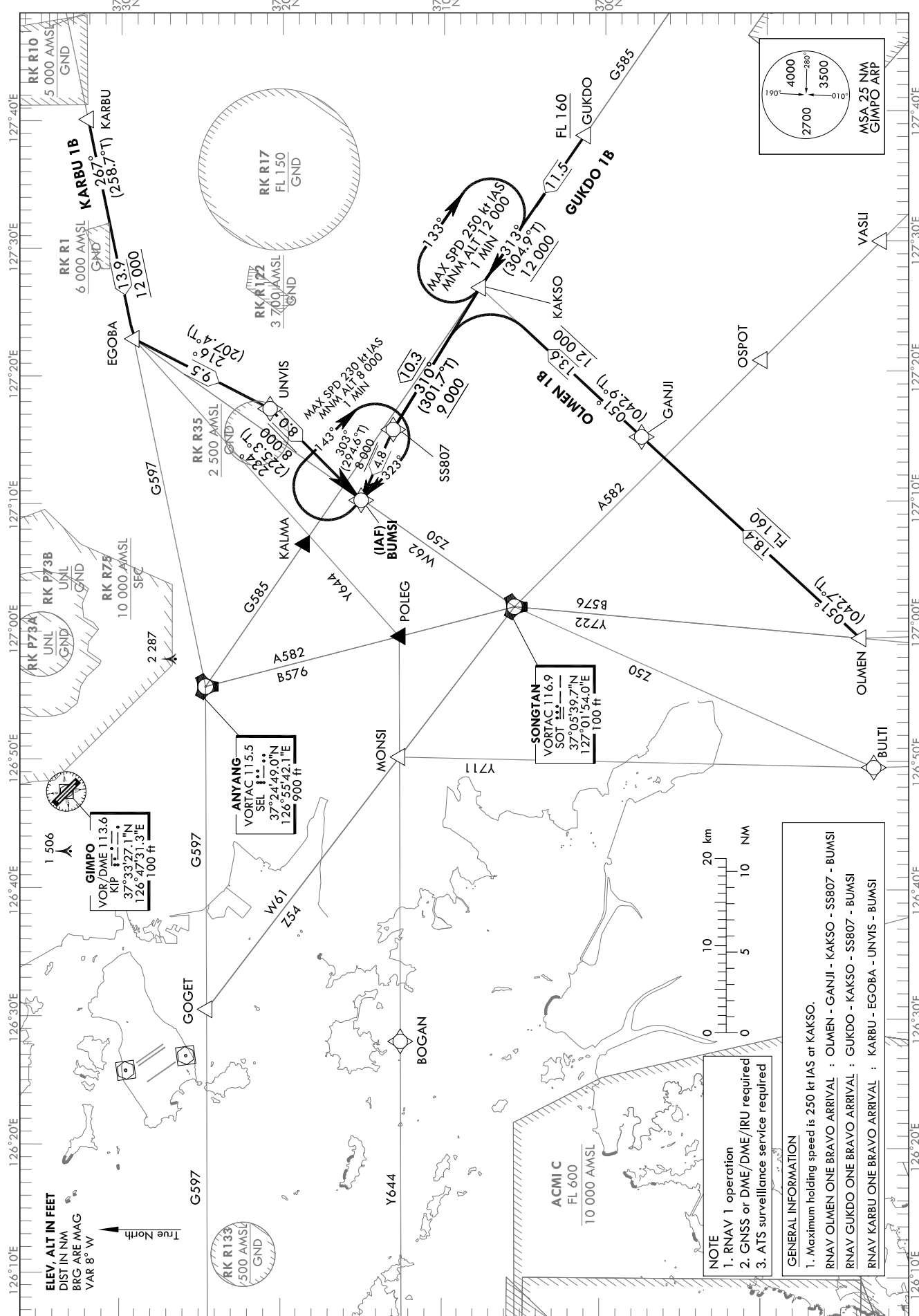
STANDARD ARRIVAL CHART
INSTRUMENT (STAR) - ICAO

Note : Arrival under ICAO Flight Procedures.

TRANSITION ALT 14 000
TRANSITION LVL FL 140

SEOUL APP 119.75
119.1
GIMPO TWR 118.1
118.05

SEOUL/Gimpo Intl(RKSS)
RWY 32L/R
RNAV OLMEN 1B
RNAV GUKDO 1B RNAV KARBU 1B



Change : Amended flight procedure and procedure names and information of fix.

SEOUL/Gimpo Intl(RKSS)

RWY 32L/R

RNAV OLMEN 1B

RNAV GUKDO 1B RNAV KARBU 1B

AERONAUTICAL DATA TABULATION

Standard Instrument Arrival Procedure Coding Tables

Serial Number	Path Descriptor	Waypoint Identifier	Fly-over	Course/Track °M(°T)	Distance (NM)	Turn direction	Altitude (ft)	Speed (kt)	Coordinates	VPA/RDH	Navigation specification	Remarks
001	IF	OLMEN	-	-	-	-	-	-	36°44'13.4"N 126°59'27.6"E (R 184 SEL/D41, R 193 SOT/D22)	-	RNAV 1	-
002	TF	GANJI	-	051 (042.7)	18.4	-	+FL 160	-	36°57'45.7"N 127°15'01.2"E (R 158 SEL/D31, R 135 SOT/D13)	-	RNAV 1	-
003	TF	KAKSO	-	051 (042.9)	13.6	-	+12 000	-	37°07'44.6"N 127°26'37.4"E (R 132 SEL/D30, R 092 SOT/D20)	-	RNAV 1	-
004	TF	SS807	-	310 (301.7)	10.3	-	+9 000	-	37°13'09.8"N 127°15'38.9"E (R 134 SEL/D20, R 140 KIP/D30)	-	RNAV 1	-
005	TF	BUMSI	-	303 (294.6)	4.8	-	+8 000	-	37°15'10.2"N 127°10'09.6"E (R 138 SEL/D15, R 143 KIP/D26)	-	RNAV 1	IAF

Serial Number	Path Descriptor	Waypoint Identifier	Fly-over	Course/Track °M(°T)	Distance (NM)	Turn direction	Altitude (ft)	Speed (kt)	Coordinates	VPA/RDH	Navigation specification	Remarks
001	IF	GUKDO	-	-	-	-	+FL 160	-	37°01'10.9"N 127°38'22.6"E (R 132 SEL/D42, R 107 SOT/D30)	-	RNAV 1	-
002	TF	KAKSO	-	313 (304.9)	11.5	-	+12 000	-	37°07'44.6"N 127°26'37.4"E (R 132 SEL/D30, R 092 SOT/D20)	-	RNAV 1	-
003	TF	SS807	-	310 (301.7)	10.3	-	+9 000	-	37°13'09.8"N 127°15'38.9"E (R 134 SEL/D20, R 140 KIP/D30)	-	RNAV 1	-
004	TF	BUMSI	-	303 (294.6)	4.8	-	+8 000	-	37°15'10.2"N 127°10'09.6"E (R 138 SEL/D15, R 143 KIP/D26)	-	RNAV 1	IAF

Serial Number	Path Descriptor	Waypoint Identifier	Fly-over	Course/Track °M(°T)	Distance (NM)	Turn direction	Altitude (ft)	Speed (kt)	Coordinates	VPA/RDH	Navigation specification	Remarks
001	IF	KARBU	-	-	-	-	-	-	37°31'59.0"N 127°39'52.0"E (R 086 SEL/D36, R 057 SOT/D40)	-	RNAV 1	-
002	TF	EGOBA	-	267 (258.7)	13.9	-	+12 000	-	37°29'14.7"N 127°22'45.9"E (R 086 SEL/D22, R 043 SOT/D29)	-	RNAV 1	-
003	TF	UNVIS	-	216 (207.4)	9.5	-	-	-	37°20'48.4"N 127°17'17.1"E (R 111 SEL/D18, R 126 KIP/D27)	-	RNAV 1	-
004	TF	BUMSI	-	234 (225.3)	8.0	-	+8 000	-	37°15'10.2"N 127°10'09.6"E (R 138 SEL/D15, R 143 KIP/D26)	-	RNAV 1	IAF

HOLDING PROCEDURE

Holding Identification	Path Descriptor	Waypoint Identifier	Fly-over	Course/Track °M(°T)	Distance (NM)	Time (min)	Turn direction	Altitude (ft)	Speed (kt)	Coordinates	VPA/RDH	Navigation specification	Remarks
RNAV OLMEN 1B	HM	BUMSI	Y	323 (315.2)	1	1	R	+8 000	-230	37°15'10.2"N 127°10'09.6"E (R 138 SEL/D15, R 143 KIP/D26)	-	RNAV 1	-
RNAV GUKDO 1B	HM	KAKSO	Y	313 (304.9)	1	1	R	+12 000	-250	37°07'44.6"N 127°26'37.4"E (R 132 SEL/D30, R 092 SOT/D20)	-	RNAV 1	-
	HM	BUMSI	Y	323 (315.2)	1	1	R	+8 000	-230	37°15'10.2"N 127°10'09.6"E (R 138 SEL/D15, R 143 KIP/D26)	-	RNAV 1	-
RNAV KARBU 1B	HM	BUMSI	Y	323 (315.2)	1	1	R	+8 000	-230	37°15'10.2"N 127°10'09.6"E (R 138 SEL/D15, R 143 KIP/D26)	-	RNAV 1	-

Change : Amended flight procedure names and information of fix.

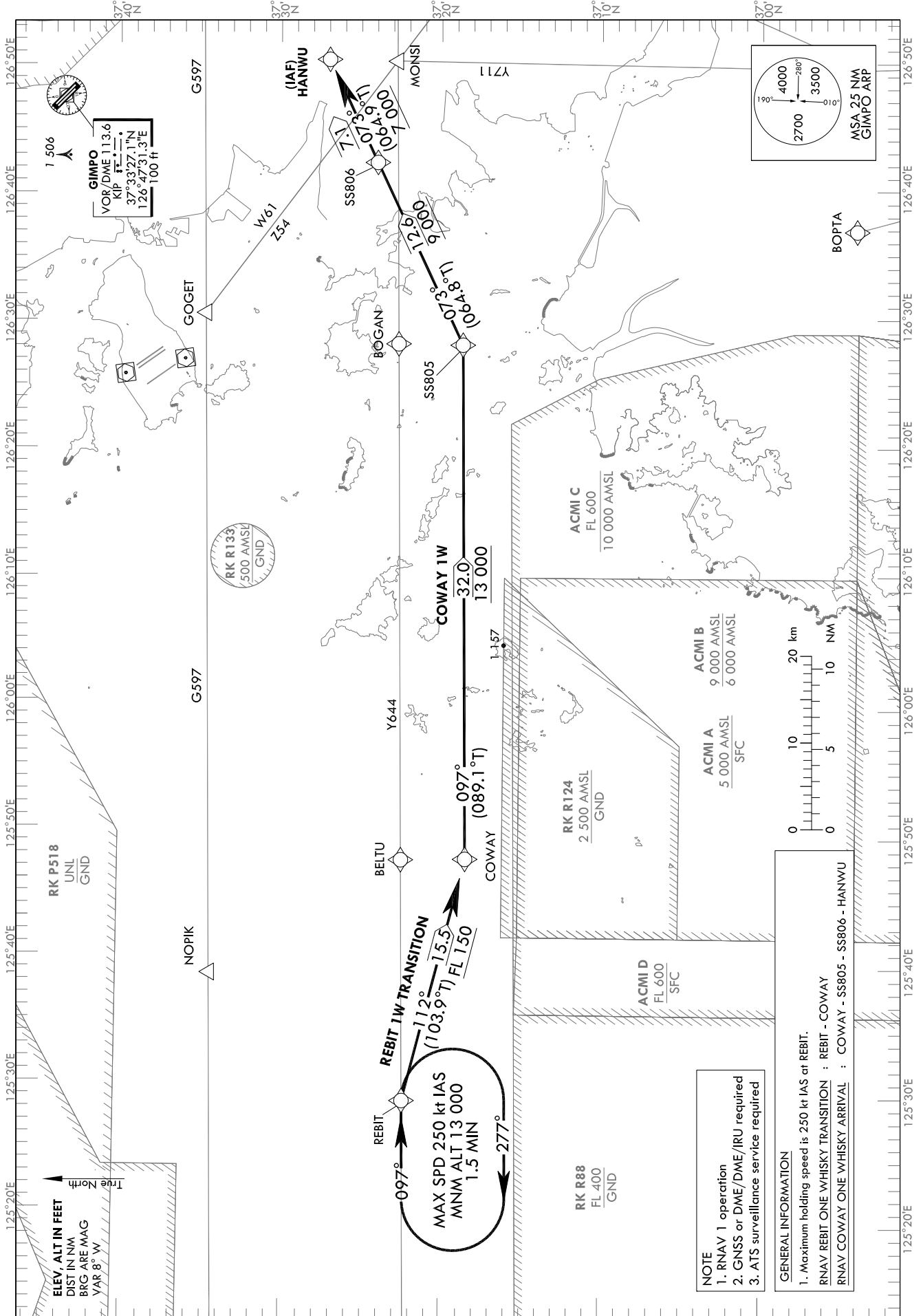
STANDARD ARRIVAL CHART
INSTRUMENT (STAR) - ICAO

Note : Arrival under ICAO Flight Procedures.

TRANSITION ALT 14 000
TRANSITION LVL FL 140

SEOUL APP 119.75
119.1
GIMPO TWR 118.1
118.05

SEOUL/Gimpo Intl(RKSS)
RWY 32L/R
RNAV COWAY 1W



SEOUL/Gimpo Intl(RKSS)

RWY 32L/R

RNAV REBIT 1W TRANSITION, RNAV COWAY 1W

AERONAUTICAL DATA TABULATION

Standard Instrument Arrival Procedure Coding Tables

RNAV REBIT 1W TRANSITION

Serial Number	Path Descriptor	Waypoint Identifier	Fly-over	Course/Track °M(°T)	Distance (NM)	Turn direction	Altitude (ft)	Speed (kt)	Coordinates	VPA/RDH	Navigation specification	Remarks
001	IF	REBIT	-	-	-	-	-	-	37°12'03.0"N 125°29'12.7"E (R 268 SEL/D70, R 283 SOT/D74)	-	RNAV 1	-
002	TF	COWAY	-	112 (103.9)	15.5	-	+FL 150	-	37°08'17.9"N 125°48'04.6"E (R 261 SEL/D56, R 281 SOT/D59)	-	RNAV 1	-

RNAV COWAY 1W

Serial Number	Path Descriptor	Waypoint Identifier	Fly-over	Course/Track °M(°T)	Distance (NM)	Turn direction	Altitude (ft)	Speed (kt)	Coordinates	VPA/RDH	Navigation specification	Remarks
001	IF	COWAY	-	-	-	-	+FL 150	-	37°08'17.9"N 125°48'04.6"E (R 261 SEL/D56, R 281 SOT/D59)	-	RNAV 1	-
002	TF	SS805	-	097 (089.1)	32.0	-	+13 000	-	37°08'40.3"N 126°28'06.7"E (R 242 SEL/D27, R 285 SOT/D27)	-	RNAV 1	-
003	TF	SS806	-	073 (064.8)	12.6	-	+9 000	-	37°14'00.7"N 126°42'19.8"E (R 233 SEL/D15, R 200 KIP/D20)	-	RNAV 1	-
004	TF	HANWU	-	073 (064.9)	7.1	-	+7 000	-	37°17'00.6"N 126°50'21.9"E (R 217 SEL/D9, R 180 KIP/D17)	-	RNAV 1	IAF

HOLDING PROCEDURE

Holding Identification	Path Descriptor	Waypoint Identifier	Fly-over	Course/Track °M(°T)	Time (min)	Turn direction	Altitude (ft)	Speed (kt)	Coordinates	VPA/RDH	Navigation specification	Remarks
RNAV REBIT 1W TRANSITION	-	REBIT	Y	097 (089.1)	1.5	R	+13 000	-250	37°12'03.0"N 125°29'12.7"E (R 268 SEL/D70, R 283 SOT/D74)	-	RNAV 1	-

Change : Amended coordinate and radial format.

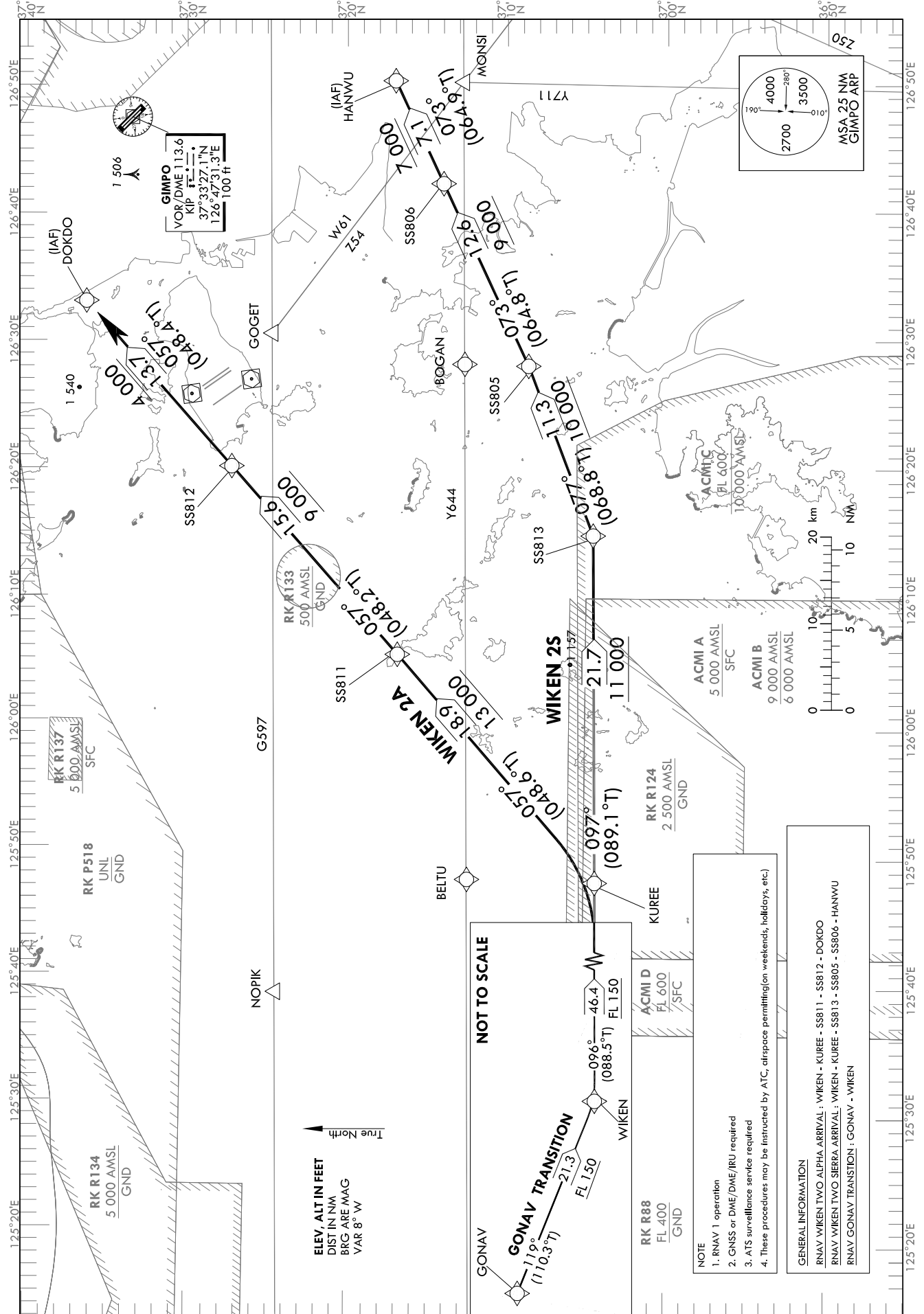
STANDARD ARRIVAL CHART
INSTRUMENT (STAR) - ICAO

Note : Arrival under ICAO Flight Procedures.

TRANSITION ALT 14 000
TRANSITION LVL FL 140

SEOUL APP 119.75
119.1
GIMPO TWR 118.1
118.05

SEOUL/Gimpo Intl(RKSS)
RWY 14L/R, RWY 32L/R
RNAV WIKEN 2A, RNAV WIKEN 2S



ELEV. ALT IN FEET
DIST IN NM
BRG ARE MAG
VAR 8° W

NOT TO SCALE

- NOTE**
1. RNAV 1 operation
 2. GNSS or DME/DME/IRU required
 3. ATIS surveillance service required
 4. These procedures may be instructed by ATIS, airspace permitting (weekends, holidays, etc.)

GENERAL INFORMATION

RNAV WIKEN TWO ALPHA ARRIVAL : WIKEN - KUREE - SS811 - SS812 - DOKDO
RNAV WIKEN TWO SIERRA ARRIVAL : WIKEN - KUREE - SS813 - SS805 - SS806 - HANWU
RNAV GONAV TRANSITION : GONAV - WIKEN

SEOUL/Gimpo Intl(RKSS)

RWY 14L/R, RWY 32L/R

RNAV WIKEN 2A, RNAV WIKEN 2S, RNAV GONAV TRANSITION

AERONAUTICAL DATA TABULATION

Standard Instrument Arrival Procedure Coding Tables

Serial Number	Path Descriptor	Waypoint Identifier	Fly-over	Course/Track °M(°T)	Distance (NM)	Turn direction	Altitude (ft)	Speed (kt)	Coordinates	VPA/RDH	Navigation specification	Remarks
RNAV WIKEN 2A												
001	IF	WIKEN	-	-	-	-	+FL 150	-	37°03'21.0"N 124°49'51.1"E (R 267 SEL/D103, R 261 KIP/D99)	-	RNAV 1	-
002	TF	KUREE	-	096 (088.5)	46.4	-	+FL 150	-	37°04'17.6"N 125°47'50.3"E (R 258 SEL/D58, R 247 KIP/D56)	-	RNAV 1	-
003	TF	SS811	-	057 (048.6)	18.9	-	+13 000	-	37°16'44.9"N 126°05'33.1"E (R 267 SEL/D41, R 252 KIP/D37)	-	RNAV 1	-
004	TF	SS812	-	057 (048.2)	15.6	-	+9 000	-	37°27'10.1"N 126°20'12.3"E (R 246 SEL/D38, R 262 KIP/D23)	-	RNAV 1	-
005	TF	DOKDO	-	057 (048.4)	13.7	-	+4 000	-	37°36'17.1"N 126°33'07.1"E (R 311 SEL/D21, R 292 KIP/D12)	-	RNAV 1	IAF

Serial Number	Path Descriptor	Waypoint Identifier	Fly-over	Course/Track °M(°T)	Distance (NM)	Turn direction	Altitude (ft)	Speed (kt)	Coordinates	VPA/RDH	Navigation specification	Remarks
RNAV WIKEN 2S												
001	IF	WIKEN	-	-	-	-	+FL 150	-	37°03'21.0"N 124°49'51.1"E (R 267 SEL/D103, R 261 KIP/D99)	-	RNAV 1	-
002	TF	KUREE	-	096 (088.5)	46.4	-	+FL 150	-	37°04'17.6"N 125°47'50.3"E (R 258 SEL/D58, R 247 KIP/D56)	-	RNAV 1	-
003	TF	SS813	-	097 (089.1)	21.7	-	+11 000	-	37°04'34.8"N 126°14'54.2"E (R 246 SEL/D38, R 230 KIP/D39)	-	RNAV 1	-
004	TF	SS805	-	077 (068.8)	11.3	-	+10 000	-	37°08'40.3"N 126°28'06.7"E (R 242 SEL/D27, R 285 SOT/D27)	-	RNAV 1	-
005	TF	SS806	-	073 (064.8)	12.6	-	+9 000	-	37°14'00.7"N 126°42'19.8"E (R 233 SEL/D15, R 200 KIP/D20)	-	RNAV 1	-
006	TF	HANWU	-	073 (064.9)	7.1	-	+7 000	-	37°17'00.6"N 126°50'21.9"E (R 217 SEL/D9, R 180 KIP/D17)	-	RNAV 1	IAF

Serial Number	Path Descriptor	Waypoint Identifier	Fly-over	Course/Track °M(°T)	Distance (NM)	Turn direction	Altitude (ft)	Speed (kt)	Coordinates	VPA/RDH	Navigation specification	Remarks
RNAV GONAV TRANSITION												
001	IF	GONAV	-	-	-	-	-	-	37°10'48.4"N 124°24'52.6"E (R 272 SEL/D121, R 267 KIP/D116)	-	RNAV 1	-
002	TF	WIKEN	-	119 (110.3)	21.3	-	+FL 150	-	37°03'21.0"N 124°49'51.1"E (R 267 SEL/D103, R 261 KIP/D99)	-	RNAV 1	-

Change : Amended coordinate and radial format.